



Performance Report for: <https://logopedieschajkherpen.nl/>

Report generated: Tue, Jun 30, 2026 5:47 PM +0200
 Test Server Location: Frankfurt, Germany
 Using: Chrome 142.0.0.0, Lighthouse 12.6.1

B	Performance 83%	Structure 91%	L. Contentful Paint 1.6s	T. Blocking Time 0ms	C. Layout Shift 0
----------	---------------------------	-------------------------	------------------------------------	--------------------------------	-----------------------------

Top Issues

Med-Low	Use a Content Delivery Network (CDN)	27 resources found
Med-Low	Serve static assets with an efficient cache policy	Potential savings of 156KB
Low	Ensure text remains visible during webfont load	2 fonts found
Low	Preload Largest Contentful Paint image	82ms
Low	Preconnect to required origins	Potential savings of 105ms

Focus on these audits first

These audits likely have the largest impact on your page performance.

Structure audits do not directly affect your Performance Score, but improving the audits seen here can help as a starting point for overall performance gains.

Page Details



Total Page Size - 1.98MB



Total Page Requests - 45



How does this affect me?

Modern web users have a short attention span and expect a fast and seamless website experience. Delivering that fast experience can result in more traffic, more conversions, and more happiness.

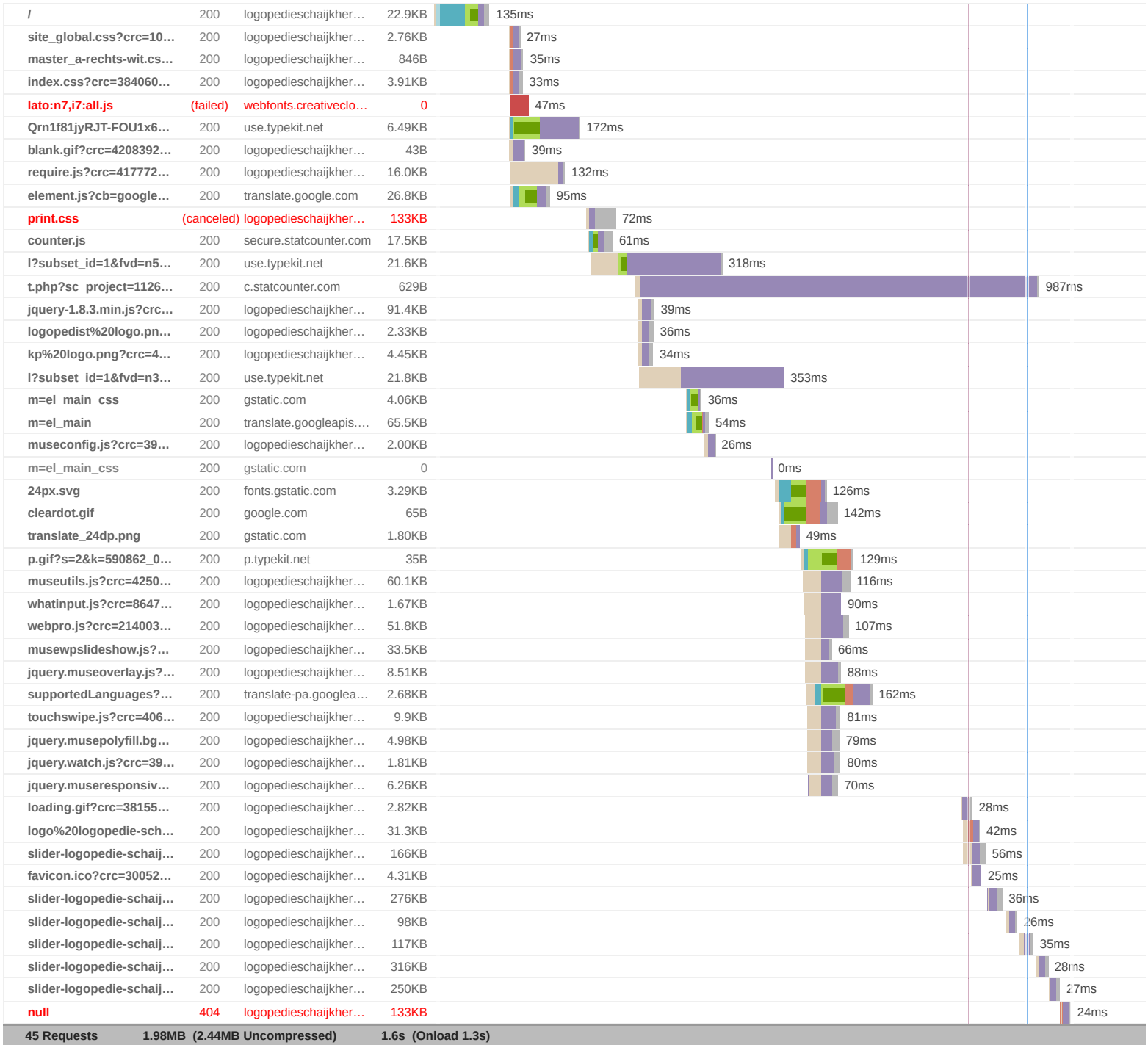
As if you didn't need more incentive, **Google use Page Speed and Page Experience (including Web Vitals) signals in their ranking algorithm.**

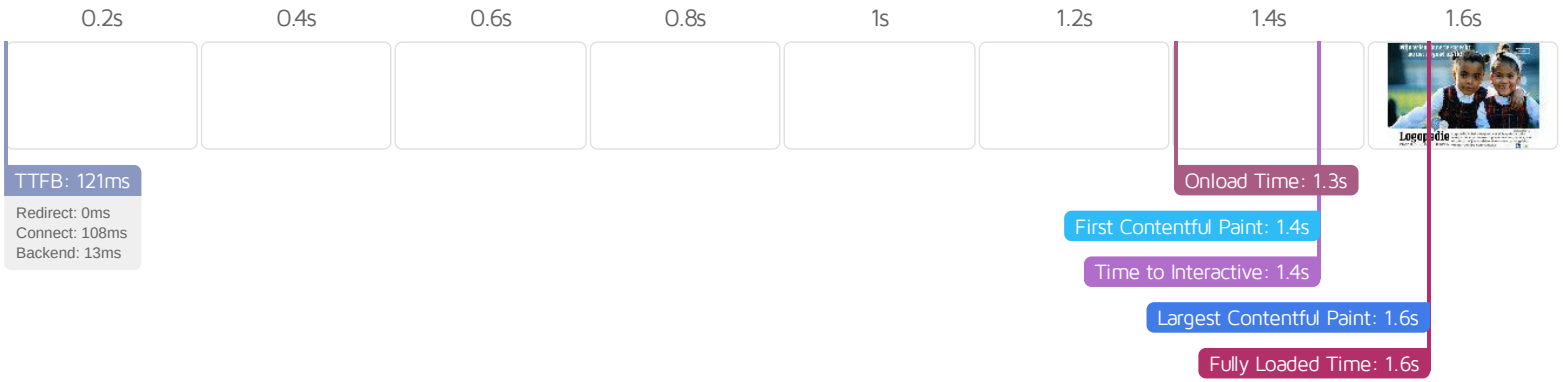
About GTmetrix

GTmetrix was developed as a tool for customers to easily test the performance of their webpages.
[Learn more about us.](#)

The waterfall chart displays the loading behaviour of your site in your selected browser. It can be used to discover simple issues such as 404's or more complex issues such as external resources blocking page rendering.

Logopedie Schaijk-Herpen | zorg voor communicatiestoornissen: 0486-463093





Performance Metrics

<p>First Contentful Paint</p> <p>How quickly content like text or images are painted onto your page. A good user experience is 0.9s or less.</p>	<p>Longer than recommended</p> <p>1.4s</p>	<p>Time to Interactive</p> <p>How long it takes for your page to become fully interactive. A good user experience is 2.5s or less.</p>	<p>Good - Nothing to do here</p> <p>1.4s</p>
<p>Speed Index</p> <p>How quickly the contents of your page are visibly populated. A good user experience is 1.3s or less.</p>	<p>Much longer than recommended</p> <p>3.0s</p>	<p>Total Blocking Time</p> <p>How much time is blocked by scripts during your page loading process. A good user experience is 150ms or less.</p>	<p>Good - Nothing to do here</p> <p>0ms</p>
<p>Largest Contentful Paint</p> <p>How long it takes for the largest element of content (i.e., a hero image) to be painted on your page. A good user experience is 1.2s or less.</p>	<p>OK, but consider improvement</p> <p>1.6s</p>	<p>Cumulative Layout Shift</p> <p>How much your page's layout shifts as it loads. A good user experience is a score of 0.1 or less.</p>	<p>Good - Nothing to do here</p> <p>0</p>

Browser Timings

Redirect	0ms	Connect	108ms	Backend	13ms
TTFB	121ms	DOM Loaded	6ms	DOM Int.	622ms
Onload	1.3s	First Paint	1.4s	Fully Loaded	1.6s

IMPACT	AUDIT	
Med-Low	Use a Content Delivery Network (CDN)	27 resources found
Med-Low	Serve static assets with an efficient cache policy	Potential savings of 156KB
Low	Ensure text remains visible during webfont load FCP LCP	2 fonts found
Low	Preload Largest Contentful Paint image LCP	82ms
Low	Preconnect to required origins FCP LCP	Potential savings of 105ms
Low	Defer offscreen images	Potential savings of 175KB
Low	Avoid enormous network payloads LCP	Total size was 1.86MB
Low	Reduce JavaScript execution time TBT	529ms spent executing JavaScript
Low	Avoid chaining critical requests FCP LCP	10 chains found
Low	Avoid an excessive DOM size TBT	771 elements
Low	Avoid long main-thread tasks TBT	5 long tasks found
Low	Serve images in next-gen formats	Potential savings of 710KB
Low	Avoid non-composited animations CLS	3 animated elements found
Low	Reduce unused JavaScript LCP	Potential savings of 221KB
Low	Efficiently encode images	Potential savings of 184KB
Low	Enable text compression FCP LCP	Potential savings of 192KB
N/A	Largest Contentful Paint element LCP	1,550 ms
N/A	Avoid serving legacy JavaScript to modern browsers TBT	Potential savings of 26.5KB
N/A	Minimize main-thread work TBT	Main-thread busy for 1.8s
N/A	Eliminate render-blocking resources FCP LCP	Potential savings of 3ms
N/A	Reduce initial server response time FCP LCP	Root document took 13ms
N/A	Reduce the impact of third-party code TBT	Third-party code blocked the main thread for 138ms
N/A	User Timing marks and measures	2 user timings